



## State Purpose of Worksheet – Alternate worksheet -2 [2019 – 2020]

[KG Class work/Home Assignment/Alternate Class work/ Revision Test/Internal Assessment/Formative Assessment/ Summative Assessment/Preboard

Name:	Std.: V	Subject: Science
Date:	Term: III	Topic: Plant Reproduction
Maximum Marks: NA	Time Duration: 20 min	Type of Assessment (if internal assessment):NA

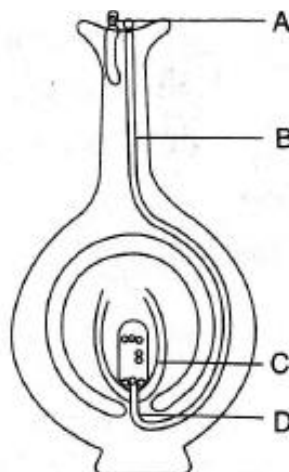
### I. Unscramble the words and find the answer.

1. Outer cover of a seed. DSEE CATO. \_\_\_\_\_
2. Seed dispersed by wind. DEDANIOLN. \_\_\_\_\_
3. Method of seed dispersal in mustard. SIONPLOEX. \_\_\_\_\_
4. Yeast reproduce by. UDINDBG \_\_\_\_\_
5. Plant developing from a mass of cell. IUESTS LUTUREC. \_\_\_\_\_

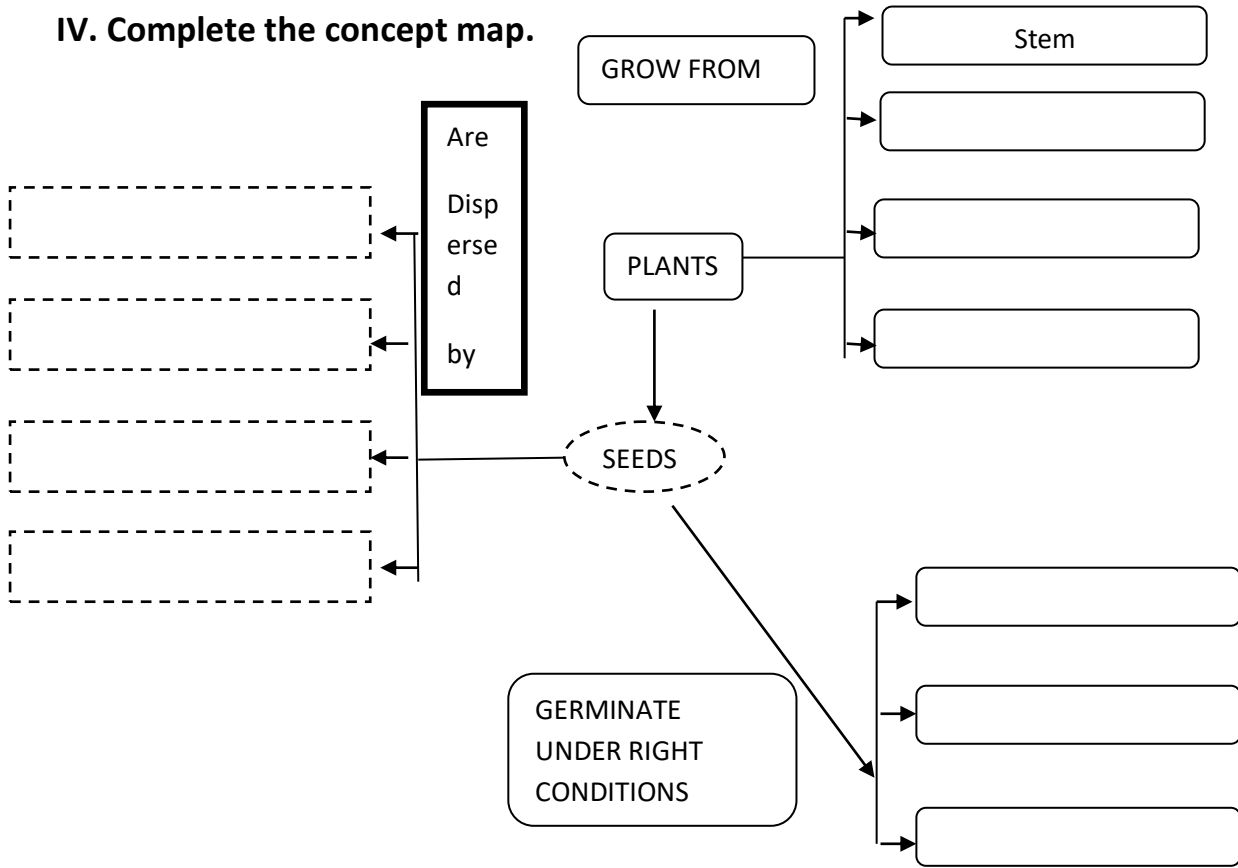
### II. Which part of the following plant will grow into a new plant?

1. Bryophyllum \_\_\_\_\_
2. Sweet potato \_\_\_\_\_
3. Ginger \_\_\_\_\_
4. Chilly \_\_\_\_\_
5. Money plant \_\_\_\_\_

### III. Label the parts.



**IV. Complete the concept map.**



**V. Think and Answer.**

1. A watermelon has many seeds. Each seed can grow into a new plant. But this does not happen. Why?

Ans:

2. Write the factors necessary for germination.

Ans: