



State Purpose of Worksheet – Alternate Worksheet - 2 [2019 – 2020]

[KG Class work/Home Assignment/Alternate Class work/Revision Test/Internal Assessment/Formative Assessment/Summative Assessment/Preboard]

Name:	Std: IV	Subject: Science
Date:	Term: III	Topic: NA
Maximum Marks: NA	Time Duration: 30min	Type of Assessment (if internal assessment):NA

1. Answer the following.

1. Give any four major causes of air pollution.
2. How do you prevent air pollution.
3. With a neat labelled diagram, explain the composition of air.
4. How do you prove that chlorophyll is necessary for photosynthesis.
5. How will you prove that starch is present in a leaf.
6. With a neat labelled diagram, explain the parts of a leaf.

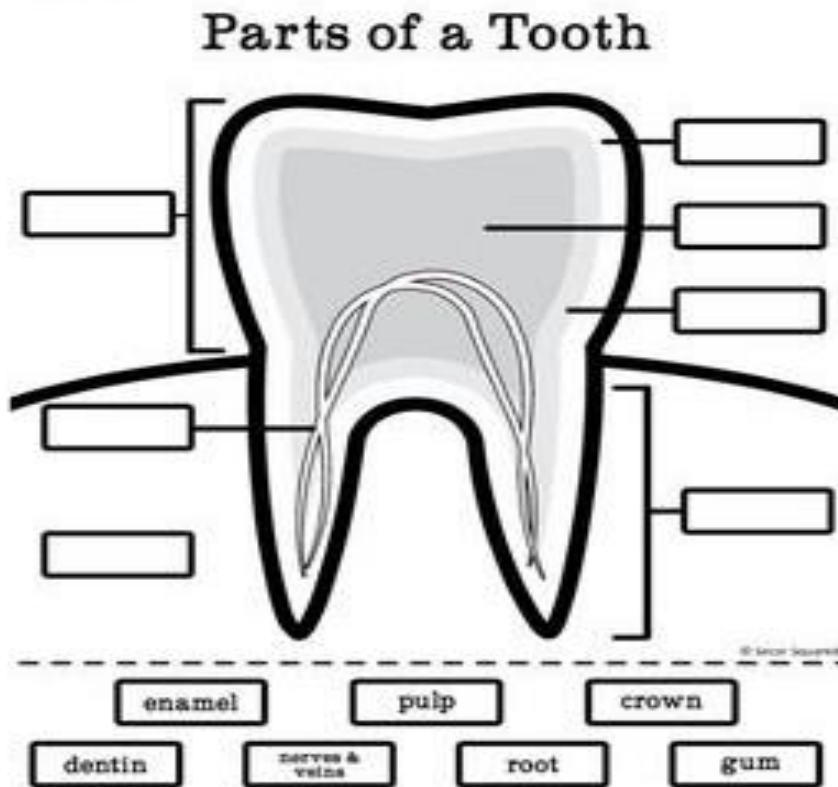
2. Picture study.

A.



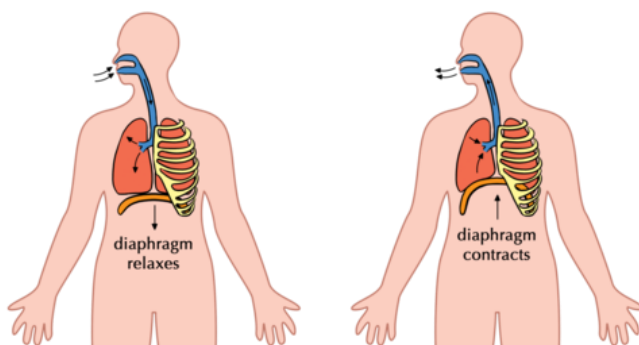
1. Name the reaction taken place in the above diagram.
2. Define the above process.
3. why is the droplets seen inside the jar.
4. Does it happens in all kinds of plants.

B.



1. Label the parts.
2. Which is the central part of the tooth.
3. Which is the hardest substance in your body.
4. Which part consists of blood vessels and nerves.
5. Explain the causes of cavities.

3.



- a. Name the process in the above diagram.
- b. Differentiate the above given process.
- c. What do you mean by breathing rate.
- d. Why mountaineers need oxygen mask.