



State Purpose of Worksheet – Model paper I [2019 – 2020]

[KG Class work/Home Assignment/Alternate Class work/ Revision Test/Internal Assessment/Formative Assessment/ Summative Assessment/Preboard]

Name:	Std: V	Subject: Science
Date:	Term: I	Topic: NA
Maximum Marks: 40	Time Duration: 1 ³/₄ hr	Type of Assessment (if internal assessment):NA

Q1. Fill in the blanks:

[2]

- Molecules are spread farthest apart in the _____ state of matter.
- The arrangement of _____ differs in different states of matter.
- Potato and ginger grow from _____.
- Seed leaves are also known as _____

Q2. Choose the correct answer from the options given below.

[2]

- A seed grows in to a _____.
 - leaf
 - young plant
 - root
- What is the female part of a flower called?
 - Anther
 - Pistil
 - Stamen
- The _____ protects the spinal cord.
 - Rib cage
 - Girdles
 - Vertebral Column
- Muscles are attached to the bones by _____.
 - tendons
 - ligaments
 - skull

Q3. Name the following:

[6]

- Three bones fused to form a single bone.
- It produces scent to attract insects.
- Amount of water vapour present in the air.
- A very strong and powerful wind accompanied by rain.
- Animals that feed on plants.
- They help in the conversion of dead and decaying of animals.

Q4. Match the following columns:

[5]

Column A

1. Translucent
2. Opaque
3. Transparent
4. Natural source of light
5. Artificial source of light

Column B

- a. sun
- b. butter paper
- c. candle
- d. glass
- e. wood

Q5. Define the following:

[5]

- a. Pleasant sound
- b. Decomposers
- c. Land breeze
- d. Cotyledon
- e. Proteins

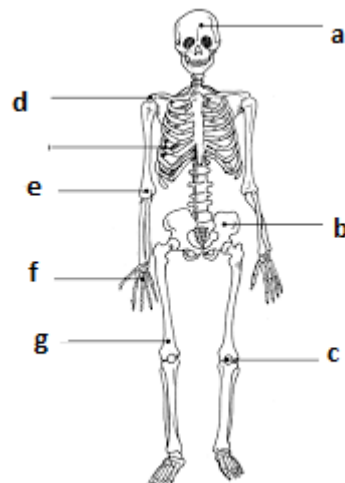
Q6. Differentiate between the following:

[6]

- a. Vitamins and Minerals
- b. Ovule and seed
- c. Dispersal by water and Dispersal by seed

Q7. Label the given diagram:

[3]



Q8. Answer the following questions:

[8]

1. How are animals dependent on plants?
2. Name the state of matter in which the particles are loosely packed?
3. Mention how pollination differs from fertilization?
4. Write down the symptoms and deficiency for the following diseases:
 - a. Night blindness
 - b. Anaemia

Q9. Identify the image given below and write its function:

[3]



A



B