



Primrose Schools

ICSE Curriculum
(A Unit of Primrose Educational Trust, Chennai)
An ISO 9001:2015 Certified Institution

State Purpose of Worksheet – III Term Examination [2018 – 2019]

[KG Class work/Home Assignment/Alternate Class work/Internal Assessment/Continuous Assessment/Unit Test/Cycle Test/Revision Test/Mid Term Examination/Term Examination/Preboard]

Name:	Std: VI	Subject: Biology
Date:	Term: III	Topic: NA
Maximum Marks: 60	Time Duration: 1 ½ hr	Type of Assessment (if internal assessment): NA

General Instructions

Answers to this Paper must be written on the paper provided separately.

*You will not be allowed to write during the **first 10** minutes.*

This time is to be spent in reading the Question Paper.

The time given at the head of this Paper is the time allowed for writing the answers.

Section I is compulsory. Attempt **any four** questions from **Section II**.

The intended marks for questions or parts of questions are given in brackets [].

Section I [30 Marks]

Attempt **all** questions

Question 1

a) Name the following.

[5]

- A process of fusion of a male cell with a female cell in flowers
- The finger like projections, which absorb soluble food in the small intestine
- A muscular pumping organ, which pumps the blood to all the body organs
- An organ where bile juice is stored temporarily
- Lack of nutrition in the diet

b) State whether the following statements are true or false.

[5]

- The left and the right side of the heart is separated by a septum.
- Absorption and assimilation are the similar processes of digestion.
- Kwashiorkor is caused due to the deficiency of proteins in the diet.
- Washing of hands can prevent the spread of deficiency diseases.
- Zygote is the result of fusion of male cell with the female cell.

c) Match the items in Column A with Column B.

[5]

Column A

Column B

- | | |
|----------------|----------------------------------|
| i) Epicarp | a) Egestion |
| ii) Blood | b) Fats |
| iii) Vitamin D | c) outer skin of the fruit |
| iv) Anus | d) Controls the body temperature |
| v) Lipase | e) Prevents rickets |

d) Fill in the blanks.

[5]

- i) The enzyme present in saliva is _____.
- ii) Pulmonary veins carries _____ blood.
- iii) _____ is the connection between the flower and the plant.
- iv) Pollen grains are produced in the _____.
- v) Burning sensation in the stomach is caused due to _____ of food.

e) Give one example for each of the following.

[5]

- i) Dicotyledons
- ii) Metabolic disorders
- iii) Degenerative diseases
- iv) Hydrophily
- v) Complete flower

(f) Choose and write the correct option.

[5]

- i) Cholera and typhoid are the examples of _____ diseases.

a) Air - borne	b) water - borne	c) Deficiency	d) Both b and c
----------------	------------------	---------------	-----------------
- ii) Blood cells, which are the carriers of oxygen, are _____.

a) Red blood cells	b) White blood cells	c) platelets	d) all of them
--------------------	----------------------	--------------	----------------
- iii) Pepsin, a protein digesting enzyme is present in the _____.

a) mouth	b) oesophagus	c) stomach	d) duodenum
----------	---------------	------------	-------------
- iv) Communicable diseases are caused due to _____.

a) viruses	b) bacteria	c) protozoa	d) all of them
------------	-------------	-------------	----------------
- v) An instrument used to measure blood pressure is called the _____.

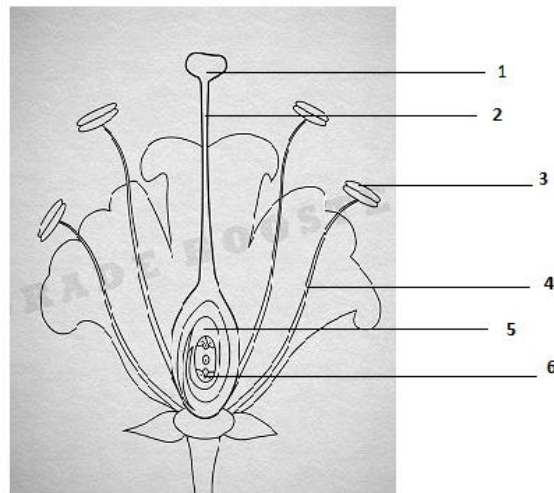
a) barometer	b) thermometer	c) ammeter	d) sphygmomanometer
--------------	----------------	------------	---------------------

Section II [30 Marks]

Attempt **any three** questions

Question 2

a) Given here is the diagrammatic sketch of the vertical cross - section of a flower.



i) Label the parts 1 to 6 [3]

ii) Name the reproductive whorls of a flower. (Male and female) [2]

b) Give Reason for the following.

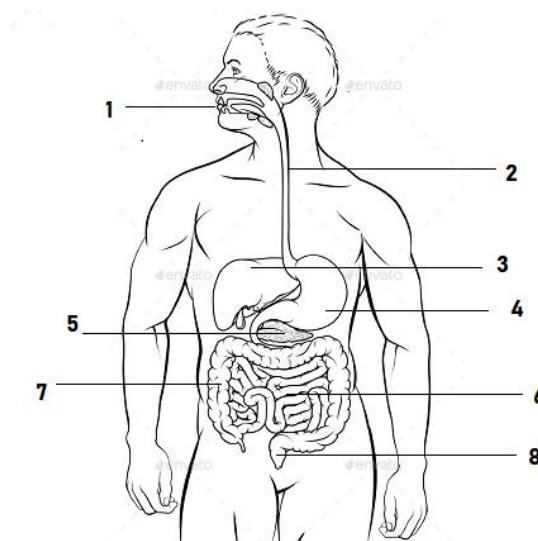
i) Eating too much of junk food causes indigestion. [2]

ii) Flowers that produce nectar are pollinated by bees. [2]

iii) A person cannot remain fit if he is clean, but his surroundings are dirty. [1]

Question 3

a) Given below is a diagram of the human digestive system.



i) Label the parts 1 to 8 [4]

ii) State the function of the part numbered 4. [1]

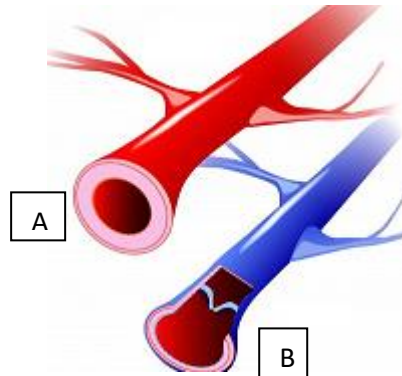
b) Define the following.

[5]

- i) Chyme
- ii) Hygiene
- iii) Nutrition
- iv) Hypogeal germination
- v) Parthenocarpic fruit

Question 4

a) The given figure shows cross section of two different types of blood vessels.



- i) Identify the blood vessels A and B. [2]
- ii) Mention any three differences between A and B. [3]

b) Answer the following.

- i) Give difference between communicable and non-communicable diseases. [3]
- ii) Why do we get fever? [2]

Question 5

a) Identify the diseases based on the symptoms shown in the pictures below.



- i) Name of the diseases [1]
- ii) Vitamin/ Mineral that is deficient. [1]
- iii) Mention any three symptoms other than shown in the image. [3]

b) State the location of the following.

[5]

- i) Testa
- ii) Crown
- iii) Colon
- iv) Aorta
- v) Rh factor