



# Primrose Schools

ICSE Curriculum

(A Unit of Primrose Educational Trust, Chennai)

An ISO 9001:2015 Certified Institution

## State Purpose of Worksheet – II Term Examination [2018 – 2019]

[III Class work/Home Assignment/Alternate Class work/Internal Assessment/Continuous Assessment/Unit Test/Cycle Test/Revision Test/Mid Term Examination/Term Examination/Preboard]

<b>Name:</b>	<b>Std: VIII</b>	<b>Subject: Biology</b>
<b>Date:</b>	<b>Term: II</b>	<b>Topic: NA</b>
<b>Maximum Marks: 80</b>	<b>Time Duration: 2 hr</b>	<b>Type of Assessment (if internal assessment): NA</b>

### Section A [40 marks]

Attempt ***all*** questions from this Section

#### Question 1

**(a) Name the following**

**[5]**

- I. Branch of agriculture that focuses on growing plants, vegetables, herbs and decorative flowers and plants.
- II. Stem of the host plant for grafting.
- III. Germs that cause diseases.
- IV. The onset of sexual maturity in humans.
- V. A mutually beneficial interaction between two organisms.

**(b) State whether the following statements are true or false.**

**[5]**

- I. Humidity is defined as the amount of water vapour at a place.
- II. Green revolution not only made India a self sufficient country, but also established it as one of the world's major agriculture producers.
- III. Plants such as ferns, fungi and mosses reproduce by means of fragmentation.
- IV. Implantation refers to the fixing of embryo in the uterus.
- V. Overdose of alcohol consumption causes even more severe depressant effects such as inability to feel pain and unconsciousness.

**(c) Match the items in Column A with Column B**

**[5]**

**Column A**

**Column B**

- |                         |   |
|-------------------------|---|
| I. Amoebic dysentery    | a) mutual attraction between water molecules. |
| II. Genetic Engineering | b) Entamoeba histolysis                       |
| III. Cohesion           | c) introduction of foreign DNA in plants.     |
| IV. Aquaculture         | d) paralysis of limbs                         |
| V. Poliomyelitis        | e) cultivating aquatic plants                 |

**(d) Fill in the blanks**

**[5]**

- I. During binary fission, the nucleus present within the \_\_\_\_\_ in the divides in to two.
- II. \_\_\_\_\_ is carried away by plants and insects to various places for pollination.
- III. The \_\_\_\_\_ is positioned behind and below the cerebrum.
- IV. \_\_\_\_\_ in the form of cigarettes, cigars and hookahs is one of the most addictive drugs used world over.
- V. \_\_\_\_\_ Crops are grown during the summer or monsoon seasons in India.

**(e) Give one example for each of the following**

**[5]**

- I. Pollination by insects
- II. Suckers
- III. Cold blooded animals
- IV. Viral diseases
- V. Layering

**(f) Define the following**

**[5]**

- I. Pollination
- II. Parasitism
- III. Diseases
- IV. Microbiology
- V. Animal husbandary

**(g) Choose the correct option**

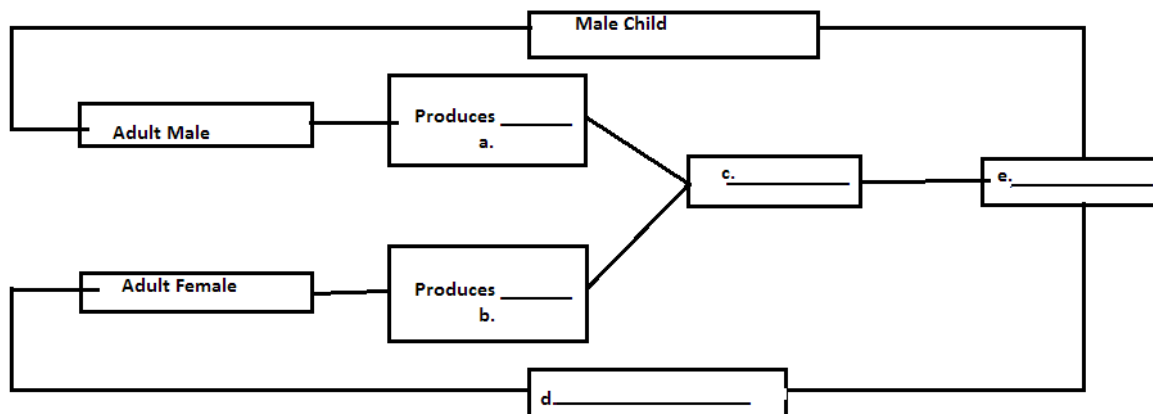
**[5]**

- I. Which of the following are the constituents of the blood?  
a. RBCs                      b. WBCs                      c. Platelets                      d. All of these
- II. \_\_\_\_\_ is the process by which the body becomes immune or resistant to certain diseases.  
a. Addiction                      b. Immunisation                      c. prevention                      d. First aid
- III. Which of the following process is used to produce beeswax?

- a. monoculture      b. polyculture      c. sericulture      d. apiculture
- IV. \_\_\_\_\_ is used in making idli.
- a. Yeasts      b. rickettsia      c. coccus      d. bacillus
- V. \_\_\_\_\_ leads to yellowing of diseases.
- a. Iron      b. Potassium      c. Phosphorous      d. None of these

(h) Complete the flowchart

[5]



## Section B [40 marks]

Attempt **any four** questions from this Section

### Question 2

(a) With reference to the diagram given below answer the following question:

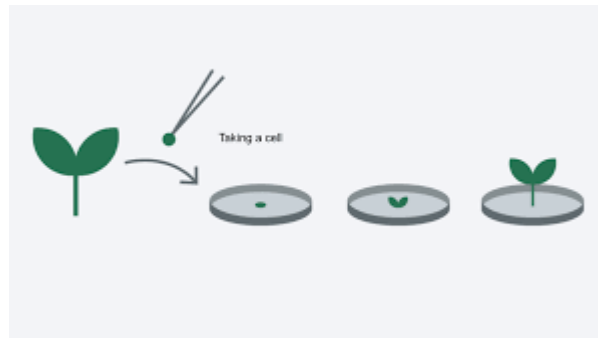


- What does the picture depict? [1]
- How is it useful to us? [1]
- Define moulting. [1]
- Draw the lifecycle of this animal. [2]

(b) What is Organic farming? How does it help in protecting the fertility of soil for a long period [5]

### Question 3

(a) With reference to the diagram given below answer the following question:



- i. What does the picture depict? [1]
- ii. Define Totipotency. [1]
- iii. Explain the process [3]

#### (b) Give Reason

- i. pH of fish tanks are kept alkaline [2]
- ii. Magnesium is important for plants [3]

### Question 4

(a) With reference to the diagram given below answer the following question:



- i. Identify the plant [1]
- ii. To which forest ecosystem does it belong? [1]
- iii. What type of leaves does it have and why? [2]
- iv. Give one example of fauna of this ecosystem. [1]

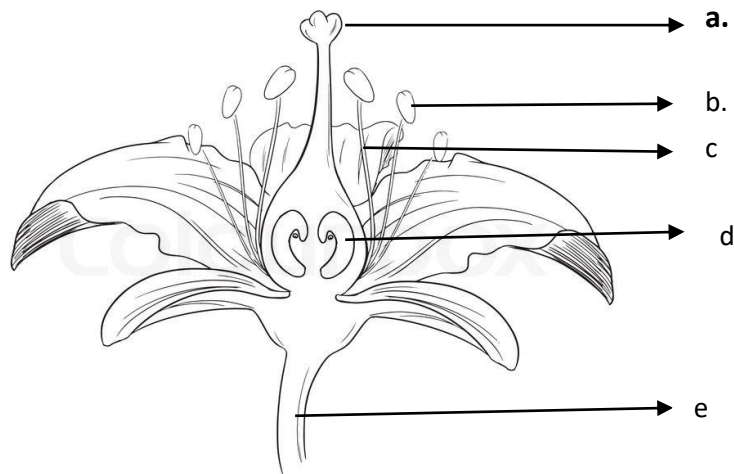
#### (b) Answer the following questions given below

- i. How is transpiration affected by the availability of water? [2]
- ii. What is the importance of vaccination [1]
- iii. Give two difference between tricuspid valve and bicuspid valve [2]

### Question 5

(a) Label the given diagram

[5]



(b) i. Describe the importance of transpiration in plants

[3]

ii. What happens to the sperms that do not participate in the process of fertilization

[2]

### Question 6

(a) Child A is suffering from typhoid. Write causative agent, symptoms and preventive measures for this disease.

[5]

(b) i. Explain food chain with the help of a diagram.

[3]

ii. Define Lenticels

[2]